



SMPCEMPoweringOthers

# THE CURRENT

THE OFFICIAL COMMUNITY RELATIONS NEWSLETTER OF SEM-CALACA POWER CORPORATION AND SOUTHWEST LUZON POWER GENERATION CORPORATION

SUBSIDIARIES OF SEMIRARA MINING AND POWER CORPORATION

VOLUME 1 ISSUE 2 | APRIL - JUNE 2021



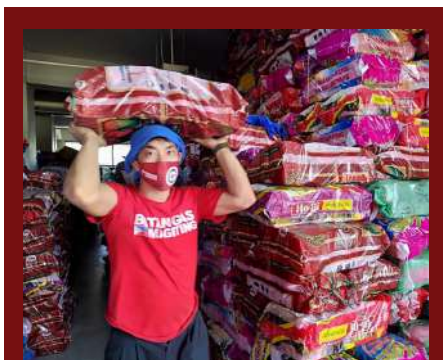
## PANGANGAILANGAN KONTRA COVID-19 NG BALAYAN, NAPONDOHAN NG ER 1-94 MULA SA DOE AT SCPC

PAHINA 6



## DONATION OF GOODS FOR COMMUNITY PANTRY

PAHINA 3



## SCPC AT SLPGC, KAISA NG BATANGAS LGU SA PAGSUGPO KONTRA COVID-19

PAHINA 8



## PERSISTING AND PREVAILING

PAHINA 10

In the spirit of bayanihan, SCPC and SLPGC provided P20,000 worth of groceries to the “community pantry” in Calaca, Batangas. The act of goodwill was initiated by the Calaca Bureau of Fire Protection and Community Rescue Volunteers.

Ang SCPC at SLPGC ay kaisa ng Provincial Cooperative, Livelihood, and Entrepreneurial Development Office (PCLEDO) sa pagsugpo at pagbawas ng epektong dulot ng COVID-19 alinsunod sa bagong patakaran ng ER 1-94.

“I am beyond grateful to the scholarship program of Sem-Calaca Power Corporation (SCPC) for supporting my college education at the Polytechnic University of the Philippines-Sta. Mesa, Manila.”



**Engr. Denel C. Mateo**  
Assistant Vice President  
and Officer-in-Charge,  
SCPC and SLPGC

Undeniably, the pandemic brought by COVID-19 has been the strongest antagonist of every humankind in these trying times. Imagine how hard it is to fight a battle with an invisible opponent. Seeing the current situation of countries severely affected is truly shattering and heartbreaking.

Everyone is vulnerable--from the most influential to the simplest individual; from the most profitable to the small businesses. We've lost millions of lives worldwide. The unemployment rate rises and many business establishments face an existential threat. Economies nearly collapsed and have suffered from a sudden freeze.

Amidst the pandemic, I believe that there's still hope that we can win the fight against this virus. Strict compliance with government-mandated safety and health protocols can save us from this global crisis. It is our responsibility to keep ourselves and others safe and indestructible from any kind of virus.

After all, life, as the most precious gift from God, is temporary. I've learned to appreciate life more, and be more thankful that despite the adversities, I still have the opportunity to continuously live with a purpose. This global pandemic teaches us a lesson that nobody should be left behind and human health and economic well-being are deeply connected. If we work together, even small actions when put together can make a big impact on the changing world.

Let us think positively that we can get through this, that no virus can destroy our humanity. Given that we are now living in a global community full of uncertainties and vulnerabilities, no one is safe until everyone is safe.

In spite of the negative vibes that the COVID-19 pandemic has caused us, there is still a glimpse of light and a lot of things to be grateful for. It's better at this point to redirect ourselves and our energy on things that will help us deal fairly and effectively during this pandemic.

Each has a share to respond to COVID-19. If we follow our health guidance and basic protocol, we can maintain our own well-being while also preserving the welfare of many, thereby contributing to the safety of our community. By proactively doing our part, we are slowing the spread of the virus and protecting the most vulnerable in the society.

Stress and anxiety may get the better of us. But we need to keep moving forward. What we can do is to adjust our approach on solving and facing the problem. We can be calm, prayerful and meditating before we set an action or solution. Do not worry nor being weary.

Reaching out and supporting each other is the best way for us to get through with this. Always remind yourself that this too shall pass and will not last forever, and although you may feel lonely specially if you have been infected by COVID-19, you are not alone. WE ARE ALL IN THIS TOGETHER!



**Edgardo V. Araya**  
Officer-in-Charge,  
Support Services,  
SCPC and SLPGC



**Hon. Mayor Emmanuel Salvador P. Fronda II**  
Municipality of Balayan, Batangas

Ang aking taos-pusong pagbati sa pamunuan ng Sem-Calaca Power Corporation, sa patuloy ninyong adhikain na mapalawak ang inyong serbisyo sa publiko, at mapanatili ang magandang pakikipag-ugnayan sa komunidad sa pamamagitan ng inyong pahayagan.

Nawa'y ang inyong pagbabahagi ng mga impormasyong nakapaloob dito ay makapagbigay kaalaman sa ating mga mamayan ng mga programa at proyekto na inyong isinasagawa tungo sa maunlad na pamayanan at pag-angat ng kanilang kabuhayan.

Aking hinahangad ang inyong matatag na pamunuan at patuloy na tagumpay sa pagbibigay ng maayos na serbisyo sa ating distrito.

REPUBLIC OF THE PHILIPPINES  
DEPARTMENT OF ENERGY

SEM-CALACA POWER CORPORATION

SOUTHWEST LUZON  
Power Generation Corporation

**THE CURRENT** is the official community relations newsletter of Sem-Calaca Power Corporation (SCPC) and Southwest Luzon Power Generation Corporation (SLPGC) published quarterly. Its main office is located at Barangay San Rafael, Calaca, Batangas 4212. For concerns, please email [communityrelations@semcalaca.com](mailto:communityrelations@semcalaca.com)

Editorial Adviser **Denel C. Mateo**  
Editor in Chief **Edgardo V. Araya**  
Managing Editor **Portia M. Vizconde**  
Associate Editor **Rafael L. Antonio**  
Editorial Assistant **Katlyn B. Panganiban** and **Vincent M. Humarang**  
Layout & Design **Kenneth James G. Ang**

# DONATION OF GOODS FOR COMMUNITY PANTRY

In the spirit of bayanihan, SCPC and SLPGC provided P20,000 worth of groceries to the “community pantry” in Calaca, Batangas. The act of goodwill was initiated by the Calaca Bureau of Fire Protection and Community Rescue Volunteers.

Community pantries have sprouted across the country to provide free food for the needy, having the motto, “share what you can, take what you need.” These have also fostered mutual aid for each other at this trying time of pandemic.



Ang SCPC at SLPGC ay kaisa ng Provincial Cooperative, Livelihood, and Entrepreneurial Development Office (PCLEDO) sa pagsugpo at pagbawas ng epektong dulot ng COVID-19 alinsunod sa bagong patakaran ng ER 1-94.

Ang ER 1-94 ay isang polisiya na nabuo sa pamamagitan ng Electric Power Industry Reform Act (EPIRA) of 2001 na pinagtibay ng Department of Energy (DOE) kung saan ang isang sentimo sa bawat kilowatt-hour ng kabuuang benta ng planta ay itinakdang ipamahagi sa mga “host communities” nito.

Layunin nito na magbigay-daan sa pagkakaroon ng alokasyon para sa Development & Livelihood Fund (DLF), Electrification Fund (EF), at Reforestation, Watershed Management, Health and Environment Enhancement Fund (RWMHEEF).

Lubos na nakababahala ang mabilis na pagtaas ng kaso ng COVID-19 sa Batangas. Batay sa datos na naitala ng Provincial Health Office, mayroon nang mahigit 19,000 kaso ng COVID-19 sa buong lalawigan.

Kaya naman ang buong pamunuan ng SCPC at SLPGC ay nagpaabot ng tulong pinansyal gamit ang pondo mula sa ER 1-94 sa pamahalaang panlalawigan upang masuportahan ang mga programa nito na nakalinya sa “Bayanihan to Heal as One Act” kontra COVID-19.

Sa pamamagitan ng pondong ipinamahagi ng planta, nakabili ang pamahalaang panlalawigan ng limang unit ng ambulansya upang mabilis na matugunan ang pangagailangang madala sa mga ospital at quarantine facilities ang mga kababayan natin na pinaghihinalaan o may karamdaman na sanhi ng pandemya. Ipinadala ang mga ito sa provincial district hospitals ng lalawigan.

Dahil sa pinairal na community

## SCPC AT SLPGC, KAISA NG BATANGAS LGU SA PAGSUGPO KONTRA COVID-19



quarantine, naging limitado ang paggalaw ng mga tao at maraming establisyemento ang ipinasara kaya naglunsad ito ng “mobile market operation” o “rolling stores” na may layuning magtuloy-tuloy ang daloy ng mga pangunahing pangangailangan ng mamamayan at matulungan ang maliliit na tindahan (retailers) na makapagbenta sa murang halaga. Tatlong (3) unit ng mobile vans ang inangkat para sa programang ito.

Nakapamahagi rin ang Batangas LGU ng rice subsidy sa low-income households sa mahigit tatlong-daan at dalawampung libong (320,000) pamilyang Batangenyong bilang suporta sa

“social amelioration program”. Gayundin ay nakapamahagi rin ito ng mga PPEs (facemasks at faceshields) at vitamins upang maiwasan ang mabilis na pagkalat ng virus.

Sa kabila ng dinaranas nating pandemya, higit na nangingibabaw pa rin ang pagkakaisa, bayanihan at pagkakawang-gawa upang malampasan ang pagsubok na dulot ng pandemyang ito. Ang SCPC at SLPGC ay laging handang tumulong at patuloy na magdadala ng pag-asa sa komunidad para mabilis na matugunan ang mga pangangailangan sa pagsugpo sa COVID-19.







## PANGANGAILANGAN KONTRA COVID-19 NG BALAYAN, NAPONDOHAN NG ER 1-94 MULA SA DOE AT SCPC

Ang lahat ng sangay ng ahensya ng gobyerno sa panahong ito ng pandemya ay tuwiran nang tumatalima sa mga pangangailangan ng kanyang nasasakupan. Bukod sa pagkain na ating pangunahing pangangailangan, inihahanda rin ng lokal na pamahalaan ang iba't ibang pamamaraan upang masugpo ang pagkalat ng COVID-19 virus sa lahat ng panig ng ating bayan.

Naging kaagapay ng lokal na pamahalaan ng Balayan ang Department of Energy (DOE) at Sem-Calaca Power Corporation (SMPC) upang mapondohan ang mga kagamitang kinakailangan sa pagpuksa sa kasalukuyang kinakaharap nating pandemya.

Ang lokal na pamahalaan ng Balayan, sa pangunguna ng butihing Mayor Emmanuel Salvador P. Fronda II, sampu ng kanyang mga konseho, sa tulong ng Municipal Administrator na si EnP.

Gonzalo A. Baral, REA, REB, at sa paggabay ng Municipal Legal Officer na si Atty. Efren R. Chavez, kabilang ang mga nurse, doctor, sanitation workers, Tri-Bureau, mga kapulisan at mga kinatawan ng bawat barangay, ay nagkaisa sa pagsasagawa ng mga aktibidades na makatutulong upang maiwasan ang sanhi ng maruming kapaligiran na maaaring magdulot ng iba't ibang klase ng virus kasama na ang COVID-19.

Gamit ang ER 1-94 pondo mula sa DOE at SCPC, ang lokal na pamahalaan ng Balayan ay nagkaroon ng mga bisikleta para sa mga frontliners, compression sprayers na ginagamit sa pag-disinfect ng iba't ibang pribado at pampublikong establisimyento, multi-purpose van na ginagamit sa paghatid at pagsundo ng mga frontliners at mga kawani ng gobyerno at paghatid din sa mga

kababayang nagpositibo sa COVID-19 test.

Bukod dito, malaking tulong ang karagdang pagbili ng trak na nagsilbing panghakot ng basura upang mapanatili ang kalinisan sa buong bayan. Pinaglaanan din ng mga airconditioning units ang isolation facility ng mga isolation facility bed, mesa, upuan at iba't-iba pang klase ng mga kagamitan.

Balayanihan, katagang sumasagisag sa pagbabayanihan ng mga taga-Balayan na naipamalas simula pa noong sumabog ang bulkang Taal hanggang sa kasalukuyang pandemyang ating kinakaharap, kaagapay ang lokal na pamahalaan upang mapagtagumpayan ang mga ito. Sa ganitong paraan naipapamalas natin sa kapwa natin Balayano ang diwa ng Sustainable Balayanihan.



Caption here:



## SUPORTA SA 'BRIGADA ESKWELA'



Higit 3,000 mag-aaral ang nasuportahan ng SCPC at SLPGC sa inilunsad nitong “Brigada Eskwela” bilang tugon sa modular distance learning.

Nagpamahagi ng 750 reams ng bond paper sa Dacanlao Day Care Center, Dacanlao Elementary School, at Calaca Elementary School sa bayan ng Calaca, at Baclaran Elementary School sa bayan ng Balayan.

Kasalukuyang ipinaairal ang modular distance learning sa mga paaralan sa bansa habang hindi pa ibinabalik ang face-to-face na pagtuturo bunsod ng banta sa kaligtasan ng COVID-19.

## 20 PLASTIC DRUMS DONATED FOR MEDICAL WASTES

As part of continuing response to COVID-19, SCPC and SLPGC donated 20 plastic drums to LGU-Calaca to serve as temporary storage of medical wastes from vaccination sites.

The surge in generation of wastes due to COVID-19 immunization program prompted the observance of strict waste management practices to prevent further exposure of health workers and communities from infectious wastes as well as protect the environment from pollution.



## HEALTH LECTURES FOR BARANGAY WORKERS



Barangay health workers (BHW) of Dacanlao in Calaca, Batangas attended a virtual health lecture on heart attack as part of information, education, and communication (IEC) campaign of SCPC and SLPGC to their impact communities.

Occupational health physician Dr. Advent Genesis Araja facilitated the lecture for BHW participants led by Agnes Luistro, wife of Dacanlao Chair Alejandro Luistro.

This quarterly IEC activity aims to raise awareness on targeted health issues common in the community and to provide demonstrations of healthy practices.



## SCPC, SLPGC PLEDGE SUPPORT TO CALACA BFP'S FIRE PREVENTION CAMPAIGN

The Safety Team of SCPC and SLPGC expressed support to the fire prevention campaign of Calaca's Bureau of Fire Protection (BFP) dubbed "Kaisa" on March 1, 2021.

With the theme "Pag-iwas Sa Sunog, Hindi Ka Nag-iisa", the event featured a parade of fire trucks from various locators in town. It was followed by a pledge signing held at Calaca Senior High School led by Calaca BFP S/Insp. Fernando Castillo. Safety Officer Gaylord Arroyo represented SCPC-SLPGC at the said event.



## SCPC NAMED MOST ACTIVE PLACEMENT PARTNER



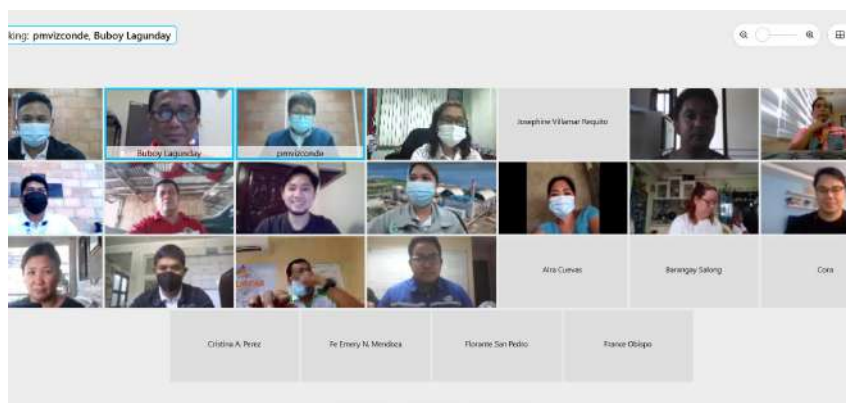
Sem-Calaca Power Corporation received the award for Most Active Placement Partners for Academic Year 2020 -2021 by the University of Batangas during the virtual awarding ceremony on June 11.

UB acknowledged SCPC's active participation in their job placement activities and for having the most number of UB graduates acquired by the company from the labor market information through job vacancies and employment conservation and establishment of employment feedback.

## DISASTER RESILIENCY WEBINAR FOR RESIDENTS

SCPC and SLPGC, through the Communications and Public Relations department, held a webinar on community-based disaster risk reduction and management for residents on May 5.

The virtual program aims to increase awareness on responding to emergencies and natural disasters. It was attended by various LGU leaders and personnel of municipal disaster response units including some residents of Calaca and Balayan towns.



Perhaps, the trials we encounter in life are what inspire us to yearn for success. Since childhood, my family have experienced penury, and I remember the hardships my parents had to endure so we have something to eat and support our education. My father's P500 income from digging sand was divided for all of our expenses; if there is nothing left, our only hope is to borrow money from relatives for our school expenses. Fortunately, we were raised with discipline, respect, and love by our parents who became our inspiration to study hard at school.

After graduating from high school, I didn't know where my dreams would go. My Tatay and Nanay had no money to support my college education. As the eldest of six siblings, I knew that if I would continue my dream of finishing school, my brothers and sisters may stop studying and will experience severe hunger. Fortunately, we inherited from our parents the traits of being madiskarte and perseverant.

I am beyond grateful to the scholarship program of Sem-Calaca Power Corporation (SCPC) for supporting my college education at the Polytechnic University of the Philippines-Sta. Mesa, Manila. Managing the scholarship allowance, I was even able to send



## PERSISTING AND PREVAILING

By **Engr. Clyde Bienson P. Calingasan**  
*SCPC Mechanical Engineer*

money to my parents to supplement their household expenses.

This scholarship also pushed me to enrich my leadership and academic skills. I served as one of the leaders of mechanical engineering student organization and became an international exchange student to Nanyang Polytechnic in Singapore. Without this scholarship, I wouldn't have experienced different opportunities like these.

Now I am a licensed mechanical

engineer at SCPC that gave me a ladder to climb the higher propositions to reach my goal. The generous support I have received is monumental and it made me realize the value of education at its finest. Rest assured that I will continue to improve my craft and erudition as a prime mover of this new industrialization.

To aspiring engineers like me, remember that "no goal is too high if you will climb it with determination, confidence and prayers in your heart."

Thank you, SCPC!



# PAGGAMOT SA MILD O MODERATE SYMPTOMS HABANG NASA BAHAY:

## KUNG IKAW AY MAY LAGNAT, MAAARING GAWIN ANG MGA SUMUSUNOD:

- Bantayan ang temperatura kada apat na oras; maaaring uminom ng Paracetamol kung ang temperatura ay lumagpas sa 37.5 degrees Celsius, kada apat na oras.
- Maligo araw-araw kung kaya at posible
- Siguraduhing may magandang daloy ng hangin sa kwarto
- Huwag magdamit o magkumot nang labis-labis
- Uminom ng maraming tubig, fresh fruit juices at mild na tsa

## KUNG IKAW AY MAY UBO AT SORE THROAT, MAAARING GAWIN ANG MGA SUMUSUNOD:

- Siguraduhin ang pag-inom ng niresetang gamot
- Uminom ng maraming tubig
- Umiwas sa mga bagay na maaaring magpalala sa iyong sintomas tulad ng alikabok, pollen, pabango at balahibo ng hayop



## MAAARI RIN GAWIN ANG MGA SUMUSUNOD PARA MAPAWI ANG IYONG SINTOMAS:

Uminom ng Salabat o iba pang tsa upang mabawasan ang kati o hapdi ng lalamunan

Magmumog ng maligamgam na tubig na may kaunting asin

Kumain ng espesyal na kendi para sa lalamunan (diffam or strepsils)

**KUNG MAY IBA PANG NARARANASANG MGA SINTOMAS NA NAKABABAHALA, AGAD NA TUMAWAG SA INYONG BHERT (BARANGAY HEALTH EMERGENCY RESPONSE TEAM)**



## MGA MALALANG SINTOMAS NG COVID-19 NA KAILANGANG BANTAYAN:

- Hirap sa paghinga kahit naka-upo
- Ubo, lagnat at humihirap sa paghinga
- Lumulubhang pag-ubo
- Pagkalito o biglaang pagbabago ng kalagayan ng pag-iisip
- Pagsakit ng dibdib
- Mababang level ng Oxygen
- Matinding pagka-antok o hindi magising; at
- Kulay bughaw o panginitim ng mukha o labi



SEM-CALACA POWER CORPORATION

SOUTHWEST LUZON Power Generation Corporation

We advocate for the minimization of our Company's environmental impact to make sure that our natural resources are conserved and protected. We conduct various monitoring activities regularly, all of which are routinely checked by the Department of Environment and Natural Resources (DENR). These quarterly monitoring activities are done with a DENR- accredited third-party consultant and results of which are validated through a separate Multi-partite Monitoring Team (MMT) validation activity.

## WATER QUALITY MONITORINGS

Groundwater								
March 3, 2021								
Station	Temperature, °C	pH	Color, ACU	TSS	Phosphate	Nitrate	Chloride	Fecal Coliform
GW1-Dacanlao Water System	29	7.5	<5	<1	0.12	1.03	10.6	4.6
GW2-New DMCI Bunkhouse	28	7.6	<5	<1	0.08	2.1	7.6	>8.0
GW3-BRP Well	28	7.8	<5	<1	0.2	0.65	9.6	8
GW4-Gate 4 Well	28	7.7	<5	<1	0.16	0.56	9.8	8
<b>DENR Standard</b>	<b>26-30</b>	<b>6.5-8.5</b>	<b>-</b>	<b>50</b>	<b>0.5</b>	<b>7</b>	<b>250</b>	<b>&lt;1.1</b>

Notes: Groundwater quality monitoring results are within DAO 2016-08 Water Quality Guidelines for Class A, except for Fecal Coliform of GW2. GW2, an observation well, is for domestic use only. GW 3 and GW 4 are observation wells inside the plant and are for domestic use only. The plant has Water Station which supplies the drinking water of employees.

River Water									
Station	Temperature, °C	pH	Color, ACU	BOD, mg/L	TSS, mg/L	Phosphate, mg/L	Nitrate, mg/L	Chloride, mg/L	Fecal Coliform, MPN/100ml
CR1-Cawong River Upstream	29	7.8	5	2	3	0.14	1.74	10.1	24x10 <sup>3</sup>
CR2-Cawong River Midstream	28	7.9	10	2	3	0.17	1.67	7.6	24x10 <sup>3</sup>
CR3-Cawong River Downstream	29	7.8	50	1	39	0.1	1.8	237.6	35x10 <sup>3</sup>
DR1-Dacanlao River Upstream	28	7.7	5	3	6	0.12	1.88	7.6	54x10 <sup>3</sup>
DR3-Dacanlao River Downstream	28	7.9	15	1	4	0.12	1.76	8	92x10 <sup>3</sup>
<b>DENR Standard</b>	<b>25-31</b>	<b>6.5-9.0</b>	<b>-</b>	<b>7</b>	<b>80</b>	<b>0.5</b>	<b>7</b>	<b>350</b>	<b>200</b>

Notes: Freshwater quality monitoring results comply with DAO 2016-08 Water Quality Guidelines for Class C, except for Fecal Coliform of all stations, BOD of CR1 and CR3 and TSS of CR3. High Coliform, Color, and TSS were due to upstream pollution. It should be noted that the plant does not discharge wastewater into any of the rivers.

## PLANT EFFLUENTS MONITORING

Plant Effluents								
Station	Temperature, °C	pH	TSS, mg/L	Oil & Grease, mg/L	Phosphate, mg/L	Boron, mg/L	COD, mg/L	Sulfate, mg/L
<b>SCPC</b>								
Condenser Outlet 1	33	8.2	1	<1.0	0.02	4.84	108	2507
Condenser Outlet 2	-	-	-	-	-	-	-	-
SCPC Outfall Discharge	33	8.1	3	<1.0	0.02	4.61	-	2415
Discharge Canal	29	8	11	<1.0	0.13	<1.0	37	71
<b>SLPGC</b>								
Condenser Outlet 3A	33	7.9	3	<1.0	0.02	4.14	142	2540
Condenser Outlet 3B	32	8	2	<1.0	0.02	3.85	120	2724
Condenser Outlet 4A	33	8.1	1	<1.0	0.02	4.4	120	2361
Condenser Outlet 4B	34	8.2	1	<1.0	0.03	4.3	140	2742
SLPGC Outfall Discharge	33	8.2	2	<1.0	0.02	3.13	179	2320
<b>Common Outfall Discharge</b>	<b>33</b>	<b>8.1</b>	<b>3</b>	<b>&lt;1.0</b>	<b>0.02</b>	<b>4.14</b>	<b>141</b>	<b>2402</b>
<b>DENR Standard</b>	<b>3<sup>b</sup></b>	<b>6.0-9.0</b>	<b>100</b>	<b>10</b>	<b>1</b>	<b>20</b>	<b>200</b>	<b>550</b>

Notes: Plant effluent quality monitoring results are within DAO 2016-08 General Effluent Standards for Class SC. High Chemical Oxygen Demand (COD) and Sulfates are inherent to marine water. Source of Condenser Outlets, Outfall Discharge and Common Outfall Discharge are all marine (sea) water. Condenser Outlet 2 is on shutdown at the time of sampling.

## AMBIENT AIR QUALITY MONITORINGS

Ambient Noise Quality Monitoring Results				
March 3-4, 2021				
Station	Morning	Daytime	Evening	Nighttime
In Front of South Bay Terminal	54	54	44	45
Outside Gate 1	53	57	47	46
Intersection going to SLPGC	51	5	50	47
Dacanlao Highway	63	63	57	46
In front of Mr. M. Secreto's House	61	62	58	47
In front of Mr. A. Valencia's House	61	61	55	46
Water Intake, before Dacanlao Bridge	59	55	54	45
In front of SLPGC Water Intake	52	57	55	46
<b>NPPCC Standard, Class D</b>	<b>70 dBA</b>	<b>75 dBA</b>	<b>70 dBA</b>	<b>65 dBA</b>

Upwind Station (Brgy. Timbani, Calaca, Batangas)					
PARAMETERS	MORNING 0600H - 0700H	DAYTIME 1315H - 1415H	EVENING 1900H - 2000H	NIGHTTIME 0015H - 0115H	DENR Limit ug/Ncm
Sulfur Dioxide (SO <sub>2</sub> )	<7	<7	17	<7	340
Nitrogen Dioxide (NO <sub>2</sub> )	<1	<1	<1	<1	260
Total Suspended Particulates (TSP)	36	88	40	50	300
Particulate Matter 10 (PM <sub>10</sub> )	32	27	30	30	200

Downwind Station (Brgy. Carenahan, Balayan, Batangas)					
PARAMETERS	MORNING 0700H - 0800H	DAYTIME 1315H - 1415H	EVENING 1900H - 2000H	NIGHTTIME 0015H - 0115H	DENR Limit ug/Ncm
Sulfur Dioxide (SO <sub>2</sub> )	<7	<7	<7	<7	340
Nitrogen Dioxide (NO <sub>2</sub> )	8	<1	5	6	260
Total Suspended Particulates (TSP)	44	67	23	32	300
Particulate Matter 10 (PM <sub>10</sub> )	41	33	45	23	200

